



Backup You Can TrustSM



BRU SERVER FOR MAC OS X

BRU Server for Mac OS X is a native Macintosh network backup software solution that protects critical information residing across the network. Based on the ultra-reliable BRU™ engine, BRU Server for Mac OS X delivers the functionality and flexibility to meet your organization's data protection needs. BRU Server brings 21+ years of Unix backup expertise to the Macintosh platform in a mature and affordable solution. BRU Server for Mac OS X supports PowerPC and Intel-based systems.

THE BRU ADVANTAGE

The unique BRU format is the foundation of its industry-leading reliability. Each and every bit taken off the disk is audited until written through to the archive device onto the media. Users have multiple options to verify the backup's accuracy—including even performing the verification on a different machine. The BRU format also supports the maximum recovery of data should bits become corrupt during storage of the media.

BRU Servers' extremely low overhead allows fast, multiple, simultaneous streams of data to be written with little or no impact on the performance of the server system, allowing you to finally realize the maximum performance that your hardware can deliver.

INVESTMENT PROTECTION

BRU Server delivers immediate investment protection because there is no requirement to install a new backup server or special disk-based virtual tape (VTL) technology. BRU Server's overhead is exceptionally low and can actually time-share with other server applications. BRU Server for Mac OS X is multi-processor and multi-core aware and compatible, and while already exceptionally low in overhead, takes advantage of these processing technologies to even further enhance the backup and restore throughput performance you'll realize.

BRU Server also delivers current and future tape investment protection. Out-of-the-box, BRU Server provides native support of all tape formats and all tape library configurations. Because of TOLIS' partnership with tape device manufacturers, we have early access to future tape technology. This access assures you of BRU's reliable support before the new technologies hit the street. And all this is accomplished without the necessity of costly special drivers, additional hardware, or specially tasked systems.

From a licensing investment perspective, the growth of an organization's backup needs should not incur a severe financial penalty to provide the needed incremental backup services. BRU Server per-seat pricing of client system licenses is cost-effective and is not price-differentiated by system platform, the class of software being implemented on them, or by the volume of data residing on them.

BRU Server delivers exceptional investment protection.

PRODUCT HIGHLIGHTS

Graphical User Interface, Character-Based, and Command Line Management Consoles for local or remote control

Straightforward installation; client systems and tape devices are automatically recognized and configured

Recovering a single file or an entire crashed system is fast & easy

BRU Server's zero impact Anytime Verify™ - backup verification options can be run as a zero impact process, freeing up the client systems faster.

Comprehensive support of client system OS's

Live backup of databases and services such as Oracle, Exchange, and Active Directory running on Windows® client systems are supported using the BRU Server Open File Manager for Windows®.

Client licensing model does not differentiate between high end server or desktop systems.

Headless backup and restore operations can be managed via telnet or ssh sessions

Supports disk-to-disk (D2D), disk-to-tape (D2T), and disk-to-disk-to-tape (D2D2T) backup strategies

Single archives of any size can be created

Easily understood and clearly defined e-mail reports document successful operation and issues should they arise - you will always know the status of your backup.

Catalogs copied to tape in addition to the server HDD to provide enhanced availability to backup data should the server system HDD fail

Full support of IP Classless environments

No special tape emulation layer required, however, BRU Server is fully compatible with all vendor's VTL implementations.

Full native compatibility with Apple's Xsan, ADIC's StorNext, and other distributed filesystems for both backup and as the disk Stage for D2D backup operations. No special tape emulation layer required

Supports multiple libraries attached to the system running BRU Server—no special licensing is required

Flexible backup job definitions because very few sites have the same backup requirements

LEADERSHIP DATA PROTECTION

- Native Mac OS X client/server backup software
- Ultra-reliable BRU™ engine delivers industry-leading data protection reliability and ultimate restorability of the protected data
- Backups can be 100% verified without access to the original filesystems
- Anytime Verify™ and Inspect Mode backup verification options can be run as a zero impact process, freeing up the client systems faster
- Broad compatibility – backups can be verified on a different system, and even on a different platform
- Scalability limited only by the network bandwidth
- Provides broadest Mac OS X tape library support available
- Data can be restored from any BRU backup data set without dependence on any special files contained on the server hard disk such as data sets
- Client system data is not interleaved with other client system data
- Client-side data encryption provides secure communication between client systems and the server
- Network traffic data compression is configurable and can provide better utilization of available network bandwidth

SEAMLESS SUPPORT FOR MAC OS X

- Client system backups are not interleaved, thereby further shortening the time to restore selected client system files
- Handles files and permissions skipped by other Mac OS X backup utilities
- Properly backs up so-called "open files" under Mac OS X Full support of case sensitivity under HFS+ filesystem
- Single archives of any size can be created
- There is no limitation to the size of the catalogs
- Integrates with Apple's Xsan technology
- Remote log-in and administration, console can be run on any number of systems

BRU SERVER SUPPORT OF TAPE TECHNOLOGY

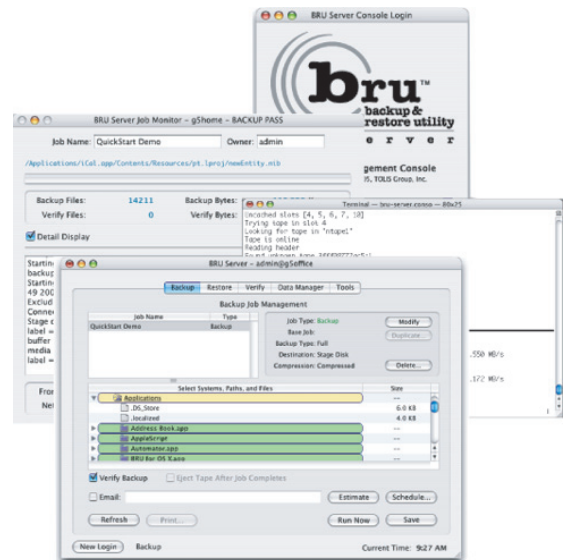
- Compatibility with all SCSI, Fibre Channel, Firewire and USB tape drives
- Compatibility with all tape technologies (i.e. LTO, DLT, AIT, VXA, others)
- Compatibility with all SCSI and Fibre Channel libraries containing any number of tape drives
- Supports any number of tape slots in a library
- Fully supports Virtual Tape Libraries (VTL)
- The ability to define "Destinations" as a fixed set of slots
- The assignment of Destinations from a pool of free slots as needed
- The allocation of slots within a tape library in an arbitrary manner
- Ability to define and exclude sets of tape cartridge slots from use
- Ability to write concurrent, non-interleaved data streams to multiple tape drives within a tape library.
- Support of variable block mode to allow modern tape drives to achieve their maximum performance potential
- TapeAlert™ to monitor and report connectivity issues, dirty tape drives, bad tape drives, and bad tapes
- Automatically inserts a tape cleaning cartridge into a tape drive in a tape library
- Alerts users to manually insert a cleaning cartridge into a standalone tape drive
- Tape bar code reader support
- Unique Drive Autobalancing™ that spreads loads across multiple drives within a library to assure enhanced library hardware uptime
- An efficient data layout on tape to optimize utilization of tape cartridge capacity
- Support of tape WORM (Write Once Read Many) technology

FLEXIBLE BACKUPS AND RESTORES

- Flexibility to define how the backup operation should be performed because very few sites have the same backup requirements
- Lights-out, automated backup operations are scheduled from the user interface
- Transport layer agnostic—Fibre Channel, SCSI, iSCSI, Gigabit Ethernet, Wireless LAN, etc.
- Provides data backup and restore services within NAS, SAN and wireless environments
- QFA (Quick File Access) provides fast access to files contained on the tape device
- Files and directories can be excluded from the backup from the client system (excluding mp3 files, for example)
- Smart Restore™. Restore active shared library and executable binary files without crashing the system.

EASY-TO-ACCESS SUPPORT

- Built-In help Pages. Useful when you can't find the manual.
- Backup Assistance Hotline. If you need assistance, we're here to help. Expert technical support FREE for the first 30 days, renewable in low-cost, one-year increments.
- Annual support agreements provide unlimited phone, fax and e-mail support as well as free updates and special discounts on product upgrades.



The GUI console provides local and remote point-and-click access to BRU Server's rich feature set. Character-based and command line operation is also supported.

BRU SERVER CLIENT SUPPORT

- Mac OS X/OSX Server 10.2, 10.3, 10.4, 10.5
- Virtually all Linux Distributions
- Solaris x86 / Solaris SPARC
- FreeBSD
- OpenBSD
- SCO OpenServer
- AIX
- IRIX
- HP-UX
- Windows Me
- Windows XP Home/Professional (Includes SP2)
- Windows NT 4.0 Workstation/Server/Enterprise Edition (Requires SP6)
- Windows 2000 Professional/Server/Advanced Server (Requires SP4)
- Windows Server 2003 Web/Standard/Enterprise/Datacenter
- Windows Vista
- Windows Database Applications such as Oracle, SQL, Exchange, etc...require the BRU Server Open File Manager Ad-On

SUPPORTED VIRTUALIZATION SOFTWARE

- Parallels – SWsoft Certified
- VMWare – TOLIS Verified

BRU SERVER SYSTEM REQUIREMENTS

- Minimum Requirements
- Mac OS X 10.2, 10.3, 10.4, 10.5
- G4 or better Processor
- 512 MB RAM
- All transport layers are supported (SCSI, Fibre-Channel, USB, and Firewire)

Recommended System Configuration

- Mac OS X 10.2, 10.3 or 10.4, 10.5
- 1 GHz G5
- 512MB RAM
- ATTO Technologies UL3, UL4, UL5 SCSI HBA (for SCSI Tapes/Libraries)
- ATTO Technologies Celerity FC HBA (for Fibre-Channel Tapes/Libraries) or a FC switch if using Apple FC HBA.

Disk Requirements

- BRU Server, 55 MB of disk for full install (server software, user interface, server agent)
- 15 MB of disk on client systems
- 3 MB of disk space for catalogs on the server per 100,000 files backed up
- Disk staging: disk requirement defined by administrator

Network Requirements

- BRU Server requires ports 14441 to 14450 open for bi-directional TCP traffic

More information:
www.tolisgroup.com
www.bru.com
TOLIS Sales: 480.505.0488