

Eaton 5115 RM UPS

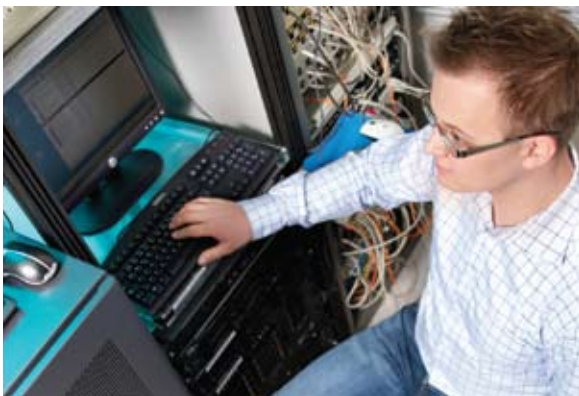
500 – 1500 VA



5115 RM front panel

Advanced power protection for:

- Small rack servers
- Rack network devices
- Small storage equipment



Line interactive UPS

Highest power performance

- The 5115 RM UPS protects critical equipment from five of nine typical power problems: power failures, sags, surges, undervoltage and overvoltage.
- The UPS guarantees pure sine wave output during battery operations. The connected load continues to receive high quality electrical wave and operates smoothly event during power outages.

Unmatched reliability

- Eaton ABM® battery management technology uses an innovative three-stage charging technique, that only recharges the battery when necessary, so the battery experiences less corrosion and service life is prolonged by up to 50%.
- Batteries can be hot-swapped without ever having to shut down connected equipment.
- The load segment control makes it possible to optimize the runtime of critical devices by shutting down non essential devices first and saving battery capacity for the most critical ones.

Outstanding versatility

- The 5115 design provides high power density, occupying only 1U (45 mm), which conserves valuable space in the rack for other equipment.
- USB and RS232 communication is offered as standard plus an extra slot for optional communication card (including SNMP/Web card).
- The UPS comes complete with the Eaton Software Suite CD, where wizard guides you through the installation process and helps you choose components that are compatible with your systems to make the installation of the shutdown software as easy as possible.
- LanSafe® shutdown software monitors the UPS and in the event of an extended power failure shuts down the entire network in predefined order.



Powering Business Worldwide

Eaton 5115 RM UPS



1. Led user interface
2. Panel for replacing batteries
3. 1 USB port + 1 serial port
4. Data line protection
5. Load segments
6. Communication card slot

TECHNICAL SPECIFICATIONS

Rating	500 VA	750 VA	1000 VA	1500 VA
Part number	103003267-6591	103003270-6591	103003273-6591	103003276-6591
Capacity (VA/watts)	500/320	750/500	1000/670	1500/1000
Dimensions WxDxH (mm)	440x580x45	440x580x45	440x580x45	440x580x45
Weight (kg)	9	15	15	19
Input connection	IEC320/10A	IEC320/10A	IEC320/10A	IEC320/10A
Output connection	4xIEC320/10A	4xIEC320/10A	4xIEC320/10A	4xIEC320/10A
Typical runtime (full load)	5 min	6 min	5 min	5 min
(half load)	15 min	17 min	15 min	15 min

Operational

Nominal input voltage (Vac)	220/230/240 Vac
Input voltage range	(± 20% of nominal)
Operating frequency	50/60 Hz auto sensing
Nominal output voltage	220/230/240 Vac
Output voltage regulation	-10%/+6% of selected nominal voltage
Overload capacity	110% 3 min; 150% 10 cycles
Efficiency	95%

User interface

LED	Four LEDs; UPS on, UPS on battery, overload, alarm
Standard communication ports	RS232/USB and X-slot
Optional	Internal SNMP adapter

Environmental

Operating temperature	0°C - +40°C
Storage temperature	-15°C -+55°C
Altitude	<3000 m
Audible noise at 1 metre	<40 dB

Certification

Markings	CE
Safety	IEC 62040-1-1 & UL 1778
EMC	IEC 62040-2, EN 6100-3-2

Eaton 5115 RM runtimes for typical applications

Load VA / W	500 VA	750 VA	1000 VA	1500 VA
200 VA / 128 W	17	38	41	76
300 VA / 192 W	11	27	28	58
500 VA / 320 W	5	14	15	28
600 VA / 400 W		9	10	19
750 VA / 500 W		6	8	14
900 VA / 600 W			6	10
1000 VA / 670 W			5	8
1200 VA / 800 W				6
1500 VA / 1000 W				5

